



AN INDEPENDENT DISTRIBUTOR FOR OVER *100* YEARS

Founded in 1919 as Bearings Specialty Company, BSC Industries has grown over the decades to meet the needs of the industrial marketplace with world-class products and engineered solutions.

History

1919

Founded as Bearings Specialty Company, located at 665 Beacon Street, Boston, supplying bearings to machine shops, manufacturers and other industrial firms.

1964

Ownership transfers to James J. Fitzpatrick and Peter Boyle. Product offering expands to include power transmission products. Opened Vermont and Maine locations.

1970s

Product offering expands to include motors and drives. Opened locations in New Hampshire and Worcester, MA.

1980s

Added Linear Motion and Motion Control products. Opened Western MA location.

1990s

Ownership transfers to Jim and Peter Fitzpatrick, sons of James J. Fitzpatrick. Product lines expand to include electrical, automation and pneumatic devices. Company moves to its new headquarters in Canton, MA.

2000s

Company acquires Machine Parts with branch locations in Connecticut and Rhode Island, and an Integrated Controls manufacturing facility in RI. Establishes a Class 10,000 Clean Room/Relubrication Center in Canton, MA.

2016

Bearings Specialty Company changes its name to BSC Industries, organized around four business platforms:

- Bearings & Power Transmission Products
- Electrical & Automation Products
- Engineering & Value Added Services
- Integrated Control Systems

2019

Company celebrates 100th anniversary.



Kenmore Square
Site of original Bearings Specialty location



Corporate Headquarters - Canton, MA

Why Choose BSC Industries?

Customers partner with us when:

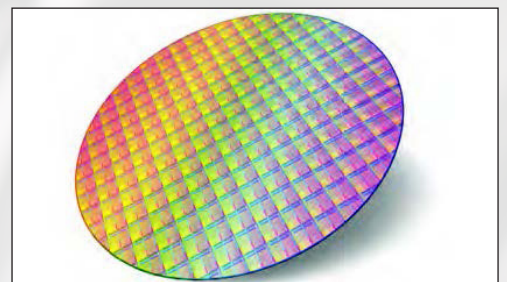
- Searching for a supplier with an extensive range of mechanical and electrical automation products
- Striving to achieve a competitive edge in the marketplace by sourcing the most cost-effective products with reasonable lead-times
- Attempting to streamline their supply chain
- Looking to introduce new products to the market with a shortened development cycle time
- Challenged with the requirement to improve the efficiency of production equipment to increase throughput
- Technical support is needed to source the best solutions for their applications
- They want to establish a long-term relationship with a supplier that has knowledgeable, reliable, and honest people that care about their business and are easy to work with

OEM and MRO Markets We Serve

Food & Beverage Processing
Packaging
Semiconductor Equipment
Medical Equipment
Energy
Printing
Consumer Products
Contract Manufacturing
Automotive

Biotechnology
Laboratory Automation
Robotics
System Integration
Process Control
Material Handling
Telecommunication
Machine Tool
Antenna Positioning

Metal Forming & Stamping
Municipalities
Transportation
Paper & Plastic Converting
Test Equipment
Wire & Cable
HVAC & Climate Control
Optical Devices
Recycling



Our Business Platforms

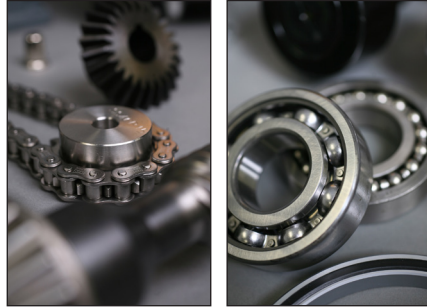
Since 1919, BSC Industries has remained committed to delivering world class products, engineered solutions, and outstanding customer service. Organized around four business platforms, the company is continuing on its path of serving customers not only in New England, but nationally and internationally.

BSC INDUSTRIES

BEARINGS AND POWER TRANSMISSION PRODUCTS

Bearings and Power Transmission Products

Our core product offering includes the complete range of bearing and power transmission products from the world's best manufacturers.



- BEARINGS-ROTARY & LINEAR
- BELTS AND PULLEYS
- BRONZE
- CHAIN & SPROCKETS
- CLUTCHES, BRAKES
- COUPLINGS & SHAFT COLLARS GEARS
- GEAR REDUCERS & GEAR MOTORS
- MOTORS-AC/DC
- SEALS & O-RINGS

BSC INDUSTRIES

ELECTRICAL AND AUTOMATION PRODUCTS

Electrical and Automation Products

Products ranging from AC drives, motors, enclosures, and connectors to DC motors, actuators, motor controls, power supplies, stepper motors, and more.



- AC/DC DRIVES & MOTORS
- CIRCUIT PROTECTION
- CONNECTORS
- ENCLOSURES
- MACHINE SAFETY
- PLC/HMI & PROCESS CONTROL
- PNEUMATICS
- PRECISION MOTION CONTROL
- WIRE/CABLE

BSC INDUSTRIES

ENGINEERING AND VALUE ADDED SERVICES

Engineering and Value Added Services

Extensive technical, engineering, and application support for our product lines along with other unique value added services.



- APPLICATION ANALYSIS
- TECHNICAL SUPPORT
- BEARING LUBRICATION SERVICES
- CLASS 10,000 CLEANROOM
- ELECTRO-MECHANICAL SUB-ASSEMBLY
- VENDOR MANAGED INVENTORY (VMI)

BSC INDUSTRIES

INTEGRATED CONTROL SYSTEMS

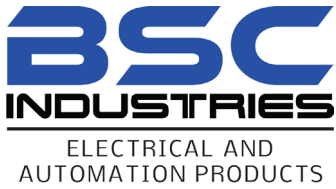
Integrated Control Systems

Complete design and integration of coordinated factory automation and process control systems.



- DESIGN/BUILD/TEST
- EXISTING MACHINE UPGRADES
- FIELD SERVICE
- MOTION/ TENSION CONTROLS
- PLC/HMI PROGRAMMING
- START-UP/ COMMISSIONING
- UL508A LISTED
- NFPA CERTIFIED

ELECTRICAL AND AUTOMATION PRODUCTS



Since 1919, BSC Industries has been an independently owned industrial distributor with 7 conveniently located New England branch locations. Our knowledgeable sales staff is ready to assist you with your bearing, power transmission, electrical, automation, and control system requirements.



Flexible Non-Metallic Conduit and Fittings



Precision Planetary Gearboxes



AC and DC Motors and Inverter Drives



AC and DC Motors and Gearmotors



Precision Planetary Gearboxes



Stepper and Servo Drives and Controllers



VLT/Vacon AC Drives and Gearmotors



PLC, HMI, Power Supplies, AC Drives, Temp Controls



Circuit Breakers, Push Buttons, Drives, PLCs



EMI/RFI Filters, Line Reactors, Power Factor Correction



Rotary and Linear Actuators, High Force



Industrial NEMA and IP Rated Enclosures



Safety and Security Fencing Systems



Precision Planetary Gear Reducers



Pushing Performance

Industrial High Density Connectors, Ethernet Connectors and Switches



Industrial NEMA and IP Rated Enclosures



Air Conditioners, Heat Exchangers, Filter Fans



Safety Products, Interlocks, Cable Pull Switches, Non-Contact



AC and DC Drives



Stepper Motors, Linear Actuators, Stepper Drives



Machine Safety, Sensors



Circuit Protection Products



Wire and Cable, Servo and Drive Cable



Stepper Motors and Drives, AC/DC Gearmotors and Drives



AC Drives and Controls



Signaling Devices, Light Towers, Horns, Buzzers



Safety Light Curtains, Safety Mats, Safety Controls



Data Displays, Data Logging, HMI, Networking Products



Pneumatic Actuators and Controls, Accessories



Wire Harnesses, Molded Cable Assemblies



AC Drives, Motor Controls, Pushbuttons, Relays



Terminal Blocks, Relays, Power Supplies, Wire Duct, Signal Conditioners

ELECTRICAL AND AUTOMATION PRODUCTS

Machine Safety
Motion Control
Sensors
Motor Control
PLC, HMI

Pneumatics
Temp/Process Control
Connector Products
Audible/Visual Indicators
Precision Gear Reducers

Industrial Networking
Electric Motors
Power Quality
Wire/Cable
Enclosures

Wire Management
Circuit Protection
Power Transmission
Wire & Harness

PRODUCT GROUPS

AC DRIVES	DC MOTORS	FLEXIBLE CONDUIT & FITTINGS	PRECISION GEARHEADS	SOFT STARTERS
ABB	ABB	Aeros	Apex Dynamics	ABB
AC Tech/Lenze	Carson Mfg	FUSES	CGI	EATON
Danfoss/Vacon	Bodine	Littelfuse	GAM	WEG
Delta	DC POWER SUPPLIES	FUSEHOLDERS	Micron/Thomson	STEPPER MOTORS & DRIVES
Parker/SSD	Delta	Littelfuse	Shimpo	Copley Controls
WEG	Leuze	Wieland	PUSHBUTTONS	EATON
AC MOTORS	Lutze	FUSIBLE DISCONNECTS	EATON	KocoMotion
ABB	Wieland	Littelfuse	WEG	Oriental Motor
Bodine	ELECTRIC ACTUATORS	GEAR MOTORS	RELAYS	TEMPERATURE & PROCESS CONTROLS
Leeson	Exlar	Bodine	Lutze	Delta
Oriental Motor	KocoMotion	Oriental Motor	WEG	Red Lion
WEG	SMC	HMI-OPERATOR DISPLAYS	Wieland	TERMINAL BLOCKS
AIR CONDITIONERS	Thompson	Delta	SAFETY INTERLOCKS	WEG
EXM	EMI/RFI FILTERS	Red Lion	IDEM	Wieland
IceQube	Enerdoor	LINE/LOAD REACTORS	Leuze	THERMAL MANAGEMENT
CIRCUIT BREAKERS	ENCLOSURES	Enerdoor	IDEM	EXM
EATON	EXM	LIGHT CURTAINS	Leuze	IceQube
WEG	Fibox	IDEM	SERVO DRIVES & MOTORS	WIRE & CABLE
Wieland	Haewa	Leuze	ABB	HARTING
CIRCUIT PROTECTION	ENCODERS	Pinnacle	Copley Controls	Lutze
Enerdoor	Dynapar	MACHINE GUARDING & FENCING	Delta	WIRE DUCT
Littelfuse	Encoder Products	Folding Guard	SIGNALING LIGHTS/BUZZERS	Wieland
Wieland	WEG	PILOT LIGHTS	Leuze	WIRE & HARNESS
CODE READERS	ETHERNET SWITCHES	Patlite	STACK LIGHTS	V-Tron
Leuze	Delta	WEG		
CONNECTORS	Leuze	PNEUMATIC VALVES & ACTUATORS		
HARTING	Red Lion/N-Tron	Boston Gear		
Wieland	Wieland	SMC		
CONTACTORS	FILTER FANS & BLOWERS			
WEG	EXM			
DC DRIVES	IceQube			
Bodine	Oriental Motor			
KB				



CORPORATE HEADQUARTERS

50 Energy Drive
Canton, MA 02021
USA
Phone: 781-989-2222
Fax: 781-989-2299
Email: Canton@bsc-ind.com
www.bsc-ind.com

MASSACHUSETTS

Canton

50 Energy Drive
Canton, MA 02021
Phone: 781-989-2222
Fax: 781-989-2299
Email: Canton@bsc-ind.com

Worcester

61 Milton Street
Worcester, MA 01606
Phone: 508-798-2222
Fax: 508-798-9301
Email: Worcester@bsc-ind.com

MAINE

Westbrook

70 Bradley Drive
Westbrook, ME 04092
Phone: 207-854-3333
Fax: 207-854-3338
Email: Westbrook@bsc-ind.com

RHODE ISLAND

Providence

150 Corliss Street
Providence, RI 02904
Phone: 401-274-4333
Fax: 401-751-0926
Email: Providence@bsc-ind.com

NEW HAMPSHIRE

Nashua

2 Townsend West, Unit #5
Nashua, NH 03063
Phone: 603-889-2222
Fax: 603-889-0320
Email: Nashua@bsc-ind.com

CONNECTICUT

Windsor Locks

1000 Old County Circle, Unit #116
Windsor Locks, CT 06096
Phone: 860-903-1111
Fax: 860-903-1117
Email: WindsorLocks@bsc-ind.com

VERMONT

Williston

47 Commerce Street
Williston, VT 05495
Phone: 802-864-6735
Fax: 802-865-4781
Email: Williston@bsc-ind.com

INTEGRATED CONTROL SYSTEMS

150 Corliss Street
Providence, RI 02904
Phone: 401-274-4333
Fax: 401-533-5434
Email: Controls@bsc-ind.com

